

# Augusoft Lumens® Collective (CLTV)

## Augusoft®

Provider of Lumens®, the first cloud-based enrollment management software designed for continuing education.

*Augusoft Lumens has changed the way we do business for our Continuing Education Division. We have seen increased enrollment and revenue due to the online registration capabilities and we are able to pull data to allow us to strategic plan.*

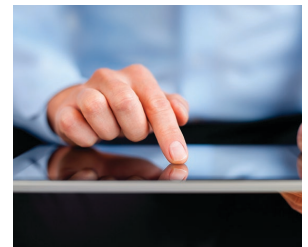
Kristi Flack  
Director of Operations, Business & Community Solutions  
Northeast Iowa Community College

Schedule your private demonstration at [augusoft.net/demo](http://augusoft.net/demo)

Augusoft's® spectrum of products and services share a proven cloud-based technology foundation – both technical and operational in scope – to run an effective e-business in a competitive environment. With Augusoft Lumens®, lifelong learning programs outsource the security, hosting and compliance issues that are integral to online commerce. Benefit from scalable core applications, flexible best-practice features, and greater user satisfaction.

### Best practices at your fingertips!

Continuing and community education programs need a powerful, intuitive online registration system. Lumens (CLTV) is a unique product that allows students or members to register or buy memberships online— like buying books, music and clothing. In addition, Lumens CLTV provides dynamic dashboards and robust reporting capability, including the ability to offer class discounts, track enrollment, and manage waiting lists.



Staff define student and member groups, specify rules of enrollment for different groups and provide easy renewal functionality for paid membership programs. Lumens CLTV reporting provides easy access to demographics and course data many programs are required to collect and report out to state agencies, foundations, boards of directors or institutional leadership.

Lumens CLTV is successfully being used in Osher Lifelong Learning programs, small community education programs, and independent learning centers. The Augusoft Lumens Enhanced Memberships feature provides Osher Lifelong Learning Institute (OLLI) programs with the added functionality to manage enrollments for a class or group of classes that are offered exclusively to OLLI members.

### Features and Functionality

Lumens CLTV includes all the features found in Lumens Standard (STND), plus additional functionality like membership, household profiles, room management, and class discounts.



FEATURE	STND	PRO
Customizable Branded Website	✓	✓
Online/Print Catalog Production	✓	✓
Shopping Cart	✓	✓
Recommendation Engine	✓	✓
Social Media Integration	✓	✓
Dashboards	✓	✓
Gift Purchase	✓	✓
Promotions	✓	✓
Reporting Engine with 125+ reports	✓	✓
Report Scheduling	✓	✓
Customizable Reports	✓	✓
Instructor Management	✓	✓
Record Grades & Attendance	✓	✓
Go/No Go Decision Support	✓	✓
LERN Analysis Tools	✓	✓
Google Analytics Integration	✓	✓
User Access Roles	✓	✓
Release Forms		✓
Waiting List Management		✓
Customized (User-defined) Fields		✓
Evaluations		✓
Class Discounts		✓
Members-only Registration		✓

## Key Benefits

- **Membership Creation** - Create multi-person memberships, multi-year memberships and provide discounts for early renewal. Exclusive member-only events, such as classes, camps, or trips.
- **Exclusive Events** - Limit registration to certain groups of users. Useful for member-only programs, Professional Development training for college employees, or private classes.
- **Flexible Online Registration** - Both private and public registration in one intuitive system.
- **Web Hosted** - Augusoft's customer support team provides all your implementation and training along with unlimited on-going support. The hosting, maintenance, and PCI compliant gateway for your website is included.
- **Robust Reporting and Dashboard** – Track and access the right data to make decisions that impact your bottom line. View high-level program info on your dashboard for quick decision-making.
- **Proven Return on Investment (ROI)** - Immediately increase registrations and productivity.

### All Lumens versions include:

- Unlimited live customer support
- Implementation & training
- Unlimited transactions
- Unlimited users
- Ongoing upgrades and training
- Credit card gateway
- 2000+ built-in online classes